

Metrics Reopening Advisory Team

Metrics Dashboard

Report Date: 4/16/2021 (Reflects data gathered: 4/8/21 – 4/14/21)

		Full Report Page #	Substantial	Moderate					Minimal	
Restore Illinois Plan			Phase 3	Phase 4					Phase 5	
COVID-19 Test Positivity Rates 7-day Rolling Average	Wilmette	Page 5	9.0	8.0	7.0	6.0	5.0	4.0	2.8	2.0
	NT Township	Page 6	9.0	8.0	7.0	6.0	5.0	4.0	3.4	2.0
	D39 Staff Regional Zip	Page 7	9.0	8.0	7.0	6.0	5.0	4.0	4.0	2.0
	Suburban Cook County	Page 8	9.0	8.0	7.0	6.0	5.0	5.1	3.0	2.0
	Region 10	Page 9	9.0	8.0	7.0	6.0	5.0	5.5	4.0	3.0
	Region 9	Page 9	9.0	8.0	7.0	6.0	5.0	4.0	4.5	2.0
	Region 11	Page 9	9.0	8.0	7.0	6.0	5.0	5.7	4.0	3.0
New Cases Per 100,000 Population	Wilmette	Page 5	> 130	≤ 100 to > 50					≤ 50	
	NT Township	Page 6	170	≤ 100 to > 50					≤ 50	
	D39 Staff Regional Zip	Page 7	178	≤ 100 to > 50					≤ 50	
	Suburban Cook County	Page 8	161	≤ 100 to > 50					≤ 50	
COVID Positive Cases *	Students	Page 10	> 13	≤ 12 to 6					≤ 5	
	Staff	Page 10	> 13	≤ 12 to ≥ 6					≤ 5	
	Max in 1 School	Page 10	≥ 6	< 5 to 2					≤ 1	
Staffing Levels Number of Daily Sick Day Absences Per Week	Certificated Absences	Page 13	> 60	≤ 59 to > 30					≤ 30	
	Custodial Absences	Page 13	> 30	≤ 30 to > 15					11 15	
	Support Staff Absences	Page 14	> 60	≤ 60 to > 30					29.5 30	
	Unfilled Employee Absences*	Page 14	> 30	≤ 30 to > 15					13 15	
	Working Quarantine	Page 15	> 12	≤ 12 to > 6					≤ 1	
	Non-Working Quarantine	Page 15	> 6	≤ 6 to > 3					3 3	
Student Absence Rates	Page 16	> 7%	≤ 6% to > 4%					3.8 4%		
Class Quarantine	Page 16	> 18	≤ 18 to 6					≤ 6		

* Unfilled absences are now disaggregated by unfilled employee absences of actual employees and unfilled absences of pre-emptive substitute positions that are requested. Unfilled absences within actual positions are reflected on the Dashboard. Both sets of data are reflected in the chart on page 14 of the full report.

Sources for Relevant Metrics

Note: New Guidance issued by the ISBE/IDPH on 3/9/21 and by the CDC on 2/12/21.

- [Illinois State Board of Education and Illinois Department of Public Health](#)
- [Center for Disease Control and Prevention](#)
- [Illinois Department of Public Health Regional COVID-19 Resurgence Data](#) (aligned with Governor’s Restore Illinois Plan)
- [Illinois Department of Public Health County Level COVID-19 Risk Metrics: Cook County](#)
- [Local and Regional COVID-19 Data by Zip Codes](#)
- [Cook County Department of Public Health COVID-19 Surveillance Data](#) (aka: [Shiny App](#))
- [County Level COVID-19 Risk Metrics: Cook County](#)
- [Illinois Department of Public Health COVID-19 Statistics](#)
- District 39 Metric Thresholds for Operational, Supply/Facility Adaptation Metrics, and Staffing Levels are based on D39 evaluation of and forecasting for capacity to address the challenge.
- [Illinois State Board of Education – School Report Cards](#)

Specific Guidance on Relevant Metrics and Metric Thresholds

Note: New Guidance issued by the ISBE/IDPH on 3/9/21 and by the CDC on 2/12/21.

- [Illinois Department of Public Health Adaptive Pause](#)
- [Illinois State Board of Education and Illinois Department of Public Health](#)
- [Center for Disease Control and Prevention](#)
- [Center for Disease Control and Prevention \(CDC\): Indicators for Dynamic School Decision Making & K-12 School Reopening Guidance](#)
- [Cook County Detailed Metrics and School Metrics \(click on Methodology button below data for additional information\)](#)
- [Northern Illinois Return to School Metrics: Lake County Department of Public Health](#)
- [COVID-19 Return to School Framework: DuPage County Department of Public Health](#)
- [Harvard Risk Level Model](#)
- [Governor’s Restore Illinois Plan](#)

Note: The following table reflects new guidance distributed by the CDC on 2/12/21 regarding COVID-19 community spread metrics.

Table 1. CDC Indicators and Thresholds for Community Transmission of COVID-19¹

Indicator	Low Transmission Blue	Moderate Transmission Yellow	Substantial Transmission Orange	High Transmission Red
Total new cases per 100,000 persons in the past 7 days ²	0-9	10-49	50-99	≥100
Percentage of NAATs that are positive during the past 7 days ³	<5.0%	5.0%-7.9%	8.0%-9.9%	≥10.0%

¹If the two indicators suggest different levels, the actions corresponding to the higher threshold should be chosen. County-level data on total new cases in the past 7 days and test percent positivity are available on the County View tab in [CDC’s COVID Data Tracker](#).

²Total number of new cases per 100,000 persons within the last 7 days is calculated by adding the number of new cases in the county (or other community type) in the last 7 days divided by the population in the county (or other community type) and multiplying by 100,000.

³Percentage of positive diagnostic and screening NAATs during the last 7 days is calculated by dividing the number of positive tests in the county (or other administrative level) during the last 7 days by the total number of tests resulted over the last 7 days. Additional information can be found on the [Calculating Severe Acute Respiratory Syndrome Coronavirus 2 \(SARS-CoV-2\) Laboratory Test Percent Positivity: CDC Methods and Considerations for Comparisons and Interpretation](#) webpage.

⁴Previously, CDC provided guidance for schools through the Indicators for Dynamic School Decision-Making. The current indicators and thresholds are an update to that document that reflect a focus on the past 7 days, and four (rather than five) categories of community transmission.

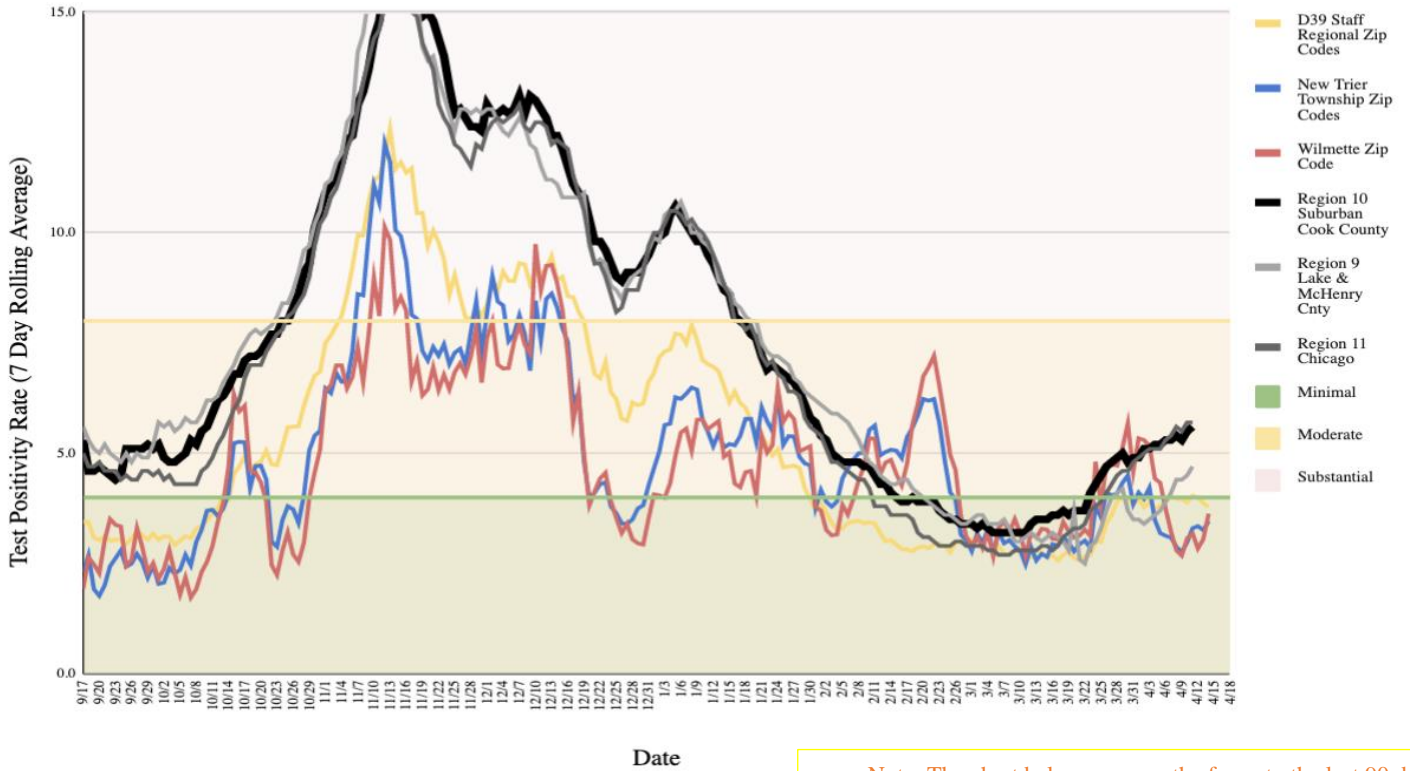
Metrics Under Review

Summary Charts – Published to the [Metrics Reopening Advisory Team Website](#)

Screenshot of data displayed on Wednesday.

COVID-19 Test Positivity Rates

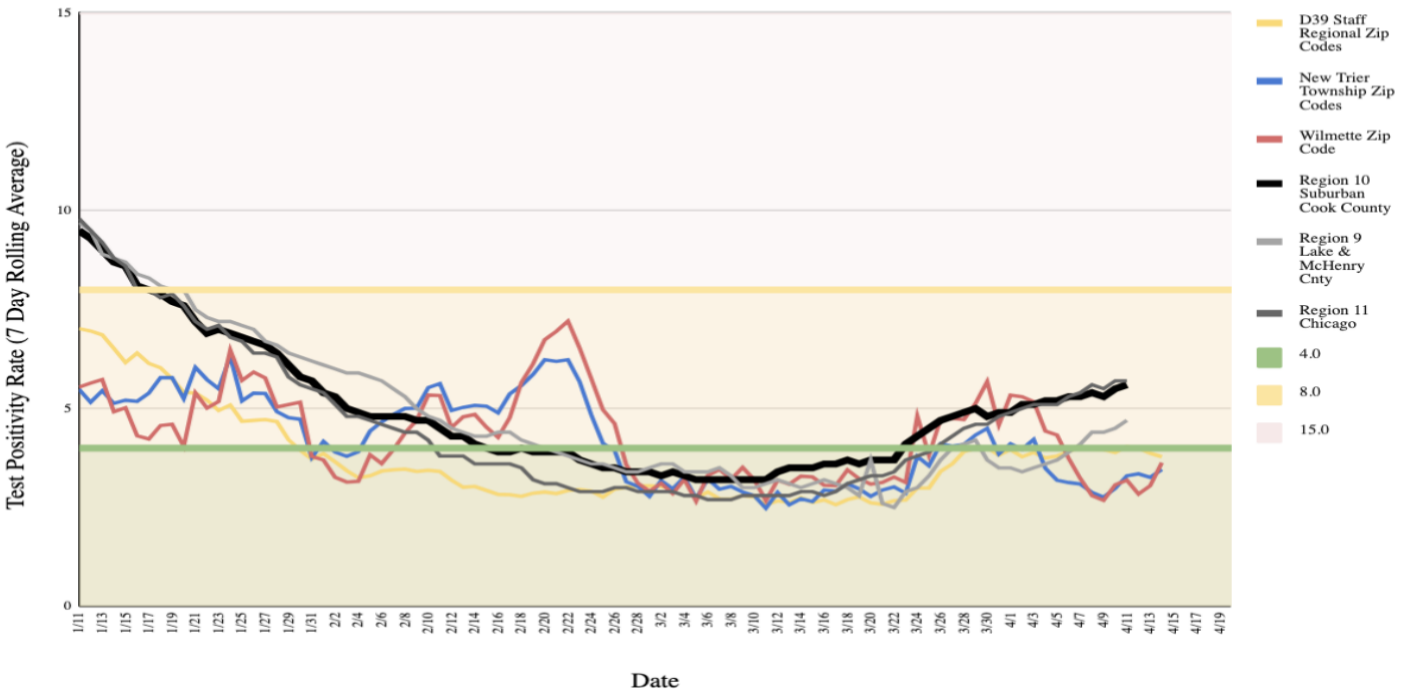
Data Available as of Wednesday 4/14/21 (IDPH data compiled by Northwestern at <http://covid-dashboard.fsm.northwestern.edu/>)



Note: The chart below narrows the focus to the last 90 days.

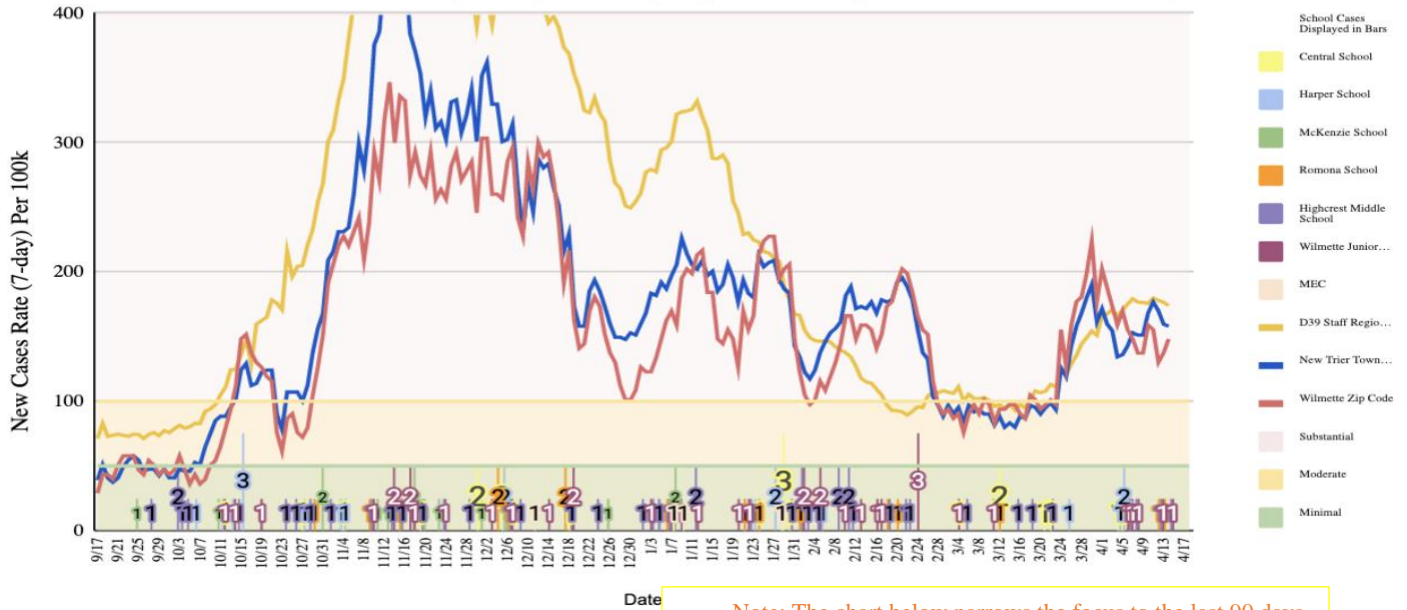
COVID-19 Test Positivity Rates

1/9/21 - Present (IDPH data compiled by Northwestern at <http://covid-dashboard.fsm.northwestern.edu/>)



New Case Rate per 100,000 Population

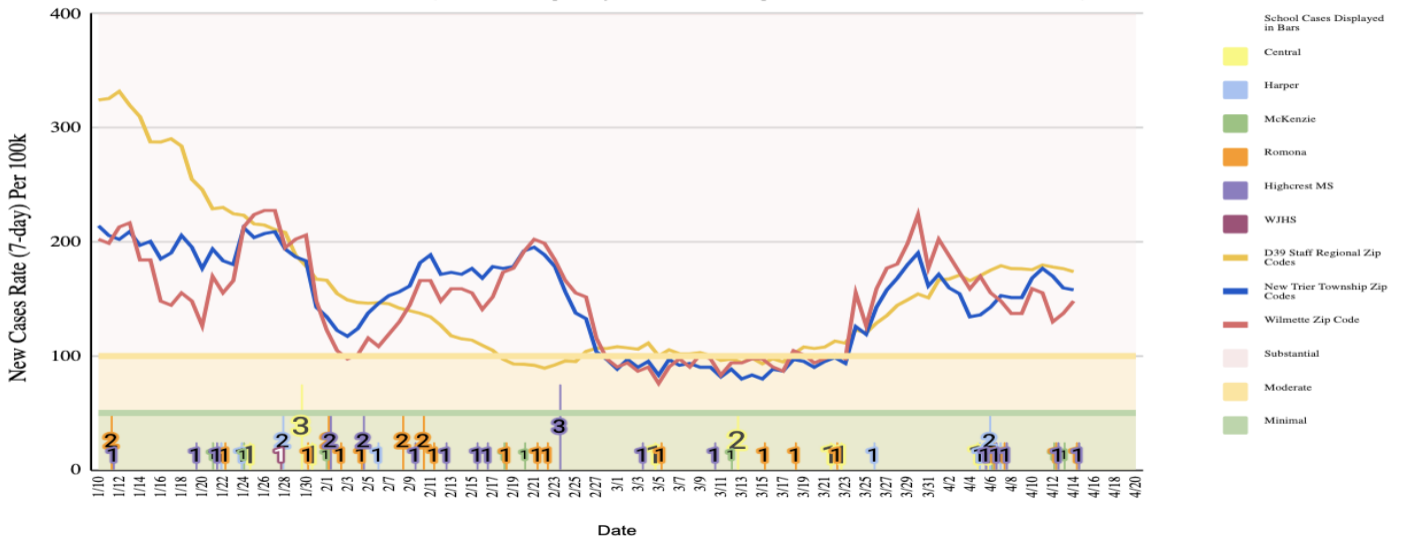
Data Available as of Wednesday 4/14/21 (IDPH data compiled by Northwestern at <http://covid-dashboard.fsm.northwestern.edu/>)



Note: The chart below narrows the focus to the last 90 days.

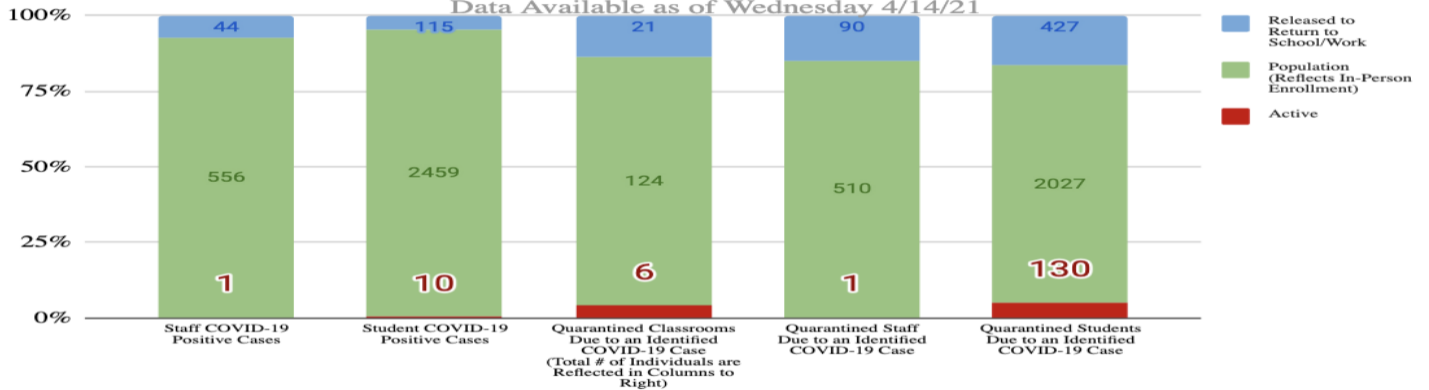
New Case Rate per 100,000 Population

1/9/21 - Present (IDPH data compiled by Northwestern at <http://covid-dashboard.fsm.northwestern.edu/>)



COVID-19 Cases in D39

Data Available as of Wednesday 4/14/21



Local COVID-19 Data: Tracked by New Trier Township from the [Illinois Department of Public Health Metrics](#) ([Additional Metric Tracker Under Development at Northwestern University](#))

- COVID Positivity Rates – 7-day Rolling Average
- New Cases per 100,000 – 7-day Rolling Average

Screenshot of data displayed on Wednesday.

1. Wilmette (60091)

Data for 4/13/2021 (7-Day)

Rolling Average Number Tested per Day	177.7
Rolling Average Number of Positive COVID Tests per Day	5.4
Rolling Average COVID Positivity Rate	3.05 %
Number of new cases (7-day) per 100,000 population	137.3

Data for 4/13/2021 (14-Day)

Rolling Average COVID Positivity Rate	3.38 %
Number of new cases (14-day) per 100,000 population*	292.6

*10/08/2020: Number of new cases per 100,000 persons within the last 14 days is calculated by adding the number of new cases in the zip code in the last 14 days divided by the population in the zip code and multiplying by 100,000. (Aligned with CDC threshold guidelines)

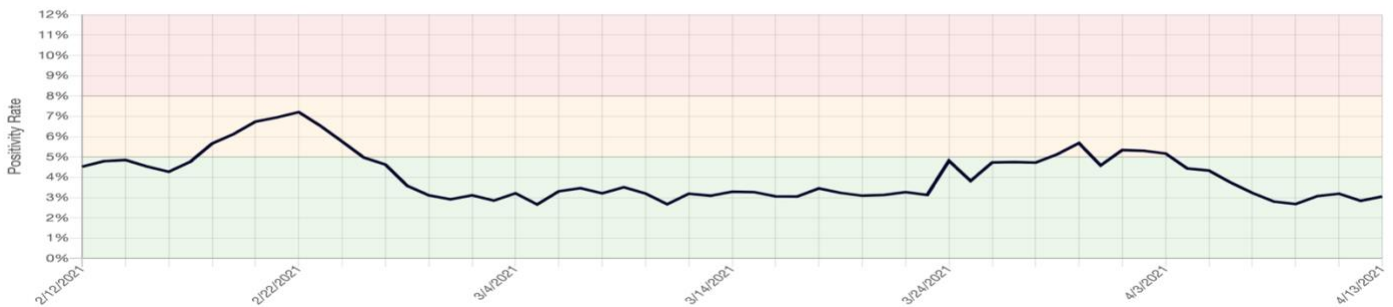
11/06/2020: Beginning 11/6 IDPH began including "probable cases" in their totals. Thus we cannot separate actual cases from probable cases at the zip code level. Given that IDPH added multiple weeks of probable cases into the data for November 6, 2020, that particular day would appear to be a sudden spike. Thus we have excluded data from that date and resumed showing data as of November 7, 2020 (that includes actual and probable cases).

Over the Last Week:

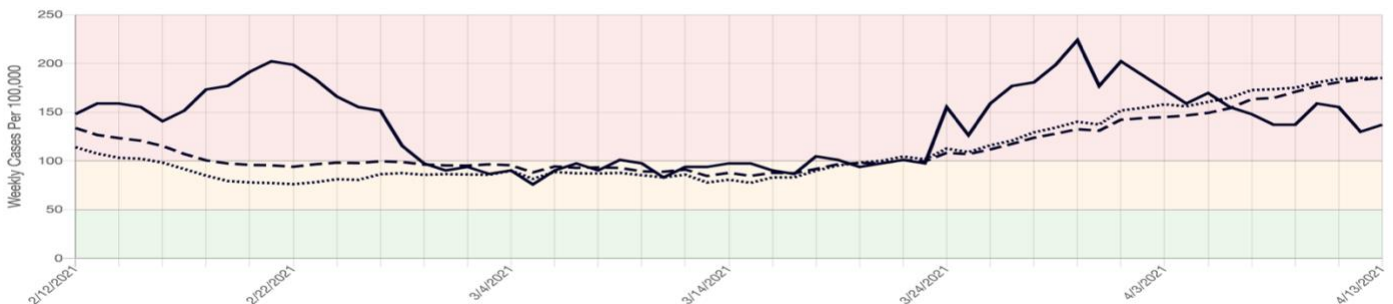
	4/6/2021	4/7/2021	4/8/2021	4/9/2021	4/10/2021	4/11/2021	4/12/2021
Tests per Day*	164.1	181.4	193.9	202.4	204.7	192.3	181.0
Cases per Day*	6.1	5.9	5.4	5.4	6.3	6.1	5.1
Positivity Rate*	3.74 %	3.23 %	2.80 %	2.68 %	3.07 %	3.19 %	2.84 %
Number of new cases (7-day) per 100,000 population	155.3	148.1	137.3	137.3	158.9	155.3	130.0

* Calculated as 7-day rolling averages

Rolling Average 7-Day COVID Positivity Rate
(Hover over the line to see the rate for a specific day)



Weekly New Case Rate per 100,000 population
(Hover over the line to see the rate for a specific day)
(Solid - Selected Zip Codes; Dashed - Illinois; Dotted - Regional)



2. New Trier Township Zip Codes (60022, 60043, 60091, 60093)

Data for 4/13/2021 (7-Day)

Rolling Average Number Tested per Day	411.9
Rolling Average Number of Positive COVID Tests per Day	13.4
Rolling Average COVID Positivity Rate	3.26 %
Number of new cases (7-day) per 100,000 population	159.7

Data for 4/13/2021 (14-Day)

Rolling Average COVID Positivity Rate	3.20 %
Number of new cases (14-day) per 100,000 population*	302.5

*10/08/2020: Number of new cases per 100,000 persons within the last 14 days is calculated by adding the number of new cases in the zip code in the last 14 days divided by the population in the zip code and multiplying by 100,000. (Aligned with CDC threshold guidelines)

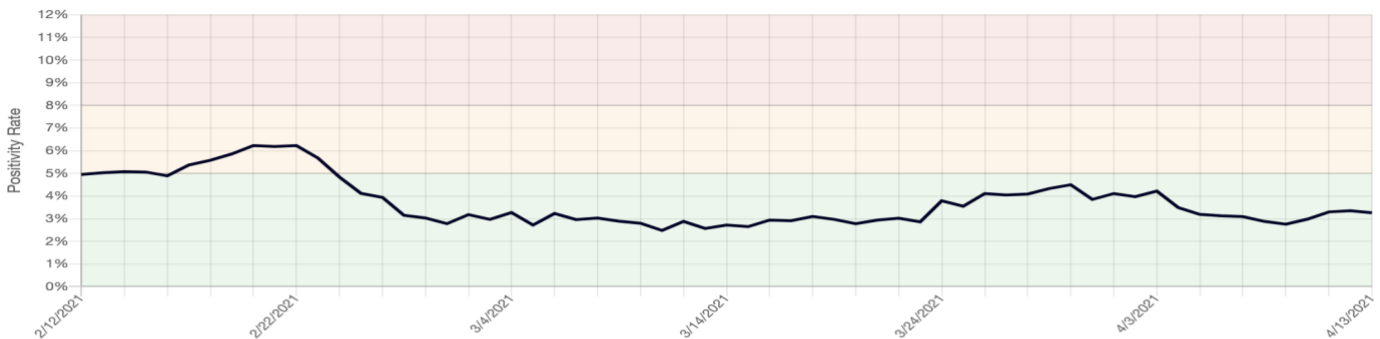
11/06/2020: Beginning 11/6 IDPH began including "probable cases" in their totals. Thus we cannot separate actual cases from probable cases at the zip code level. Given that IDPH added multiple weeks of probable cases into the data for November 6, 2020, that particular day would appear to be a sudden spike. Thus we have excluded data from that date and resumed showing data as of November 7, 2020 (that includes actual and probable cases).

Over the Last Week:

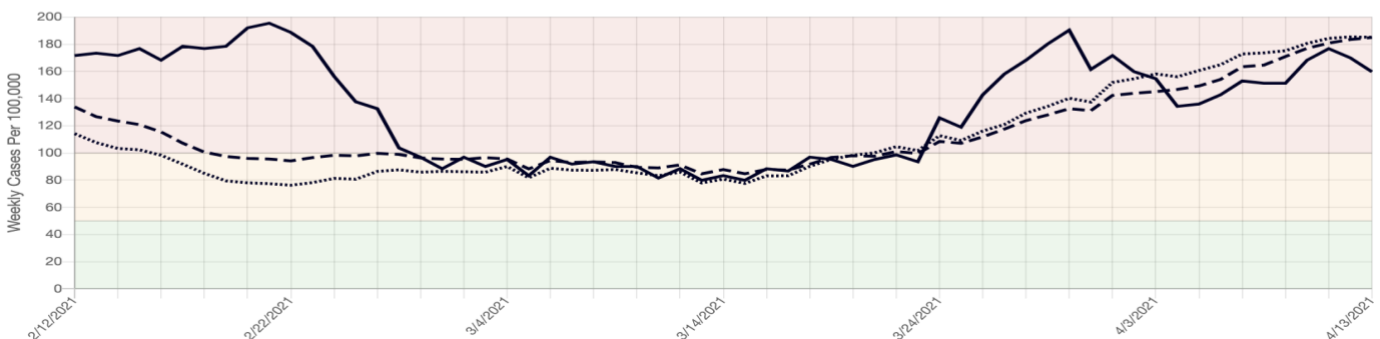
	4/6/2021	4/7/2021	4/8/2021	4/9/2021	4/10/2021	4/11/2021	4/12/2021
Tests per Day*	383.9	416.7	441.7	460.3	474.7	449.9	426.7
Cases per Day*	12.0	12.9	12.7	12.7	14.1	14.9	14.3
Positivity Rate*	3.13 %	3.09 %	2.88 %	2.76 %	2.98 %	3.30 %	3.35 %
Number of new cases (7-day) per 100,000 population	142.8	152.9	151.2	151.2	168.2	176.7	169.9

* Calculated as 7-day rolling averages

Rolling Average 7-Day COVID Positivity Rate
(Hover over the line to see the rate for a specific day)



Weekly New Case Rate per 100,000 population
(Hover over the line to see the rate for a specific day)
(Solid - Selected Zip Codes; Dashed - Illinois; Dotted - Regional)



3. D39 Regional Zip Codes (Zip Codes for 93% of D39 Staff, including: 60004, 60005, 60015, 60016, 60018, 60025, 60026, 60030, 60031, 60035, 60040, 60044, 60045, 60047, 60048, 60053, 60056, 60060, 60061, 60062, 60067, 60068, 60069, 60070, 60073, 60074, 60076, 60077, 60085, 60089, 60090, 60091, 60093, 60201, 60202, 60610, 60611, 60613, 60614, 60618, 60622, 60625, 60626, 60630, 60631, 60634, 60640, 60641, 60642, 60645, 60646, 60647, 60654, 60656, 60657, 60659, 60660, 60712, 60714)

Data for 4/13/2021 (7-Day)

Rolling Average Number Tested per Day	15155.3
Rolling Average Number of Positive COVID Tests per Day	586.9
Rolling Average COVID Positivity Rate	3.87 %
Number of new cases (7-day) per 100,000 population	176.6

Data for 4/13/2021 (14-Day)

Rolling Average COVID Positivity Rate	3.89 %
Number of new cases (14-day) per 100,000 population*	351.8

*10/08/2020: Number of new cases per 100,000 persons within the last 14 days is calculated by adding the number of new cases in the zip code in the last 14 days divided by the population in the zip code and multiplying by 100,000. (Aligned with CDC threshold guidelines)

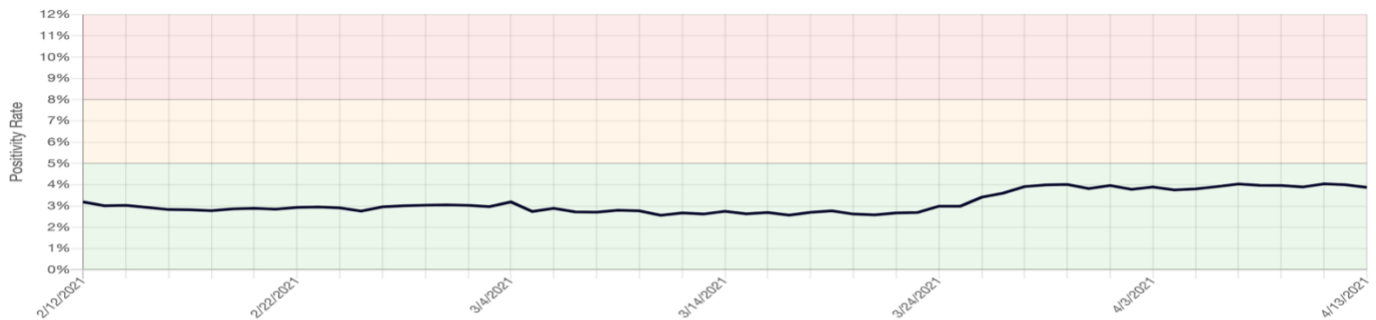
11/06/2020: Beginning 11/6 IDPH began including "probable cases" in their totals. Thus we cannot separate actual cases from probable cases at the zip code level. Given that IDPH added multiple weeks of probable cases into the data for November 6, 2020, that particular day would appear to be a sudden spike. Thus we have excluded data from that date and resumed showing data as of November 7, 2020 (that includes actual and probable cases).

Over the Last Week:

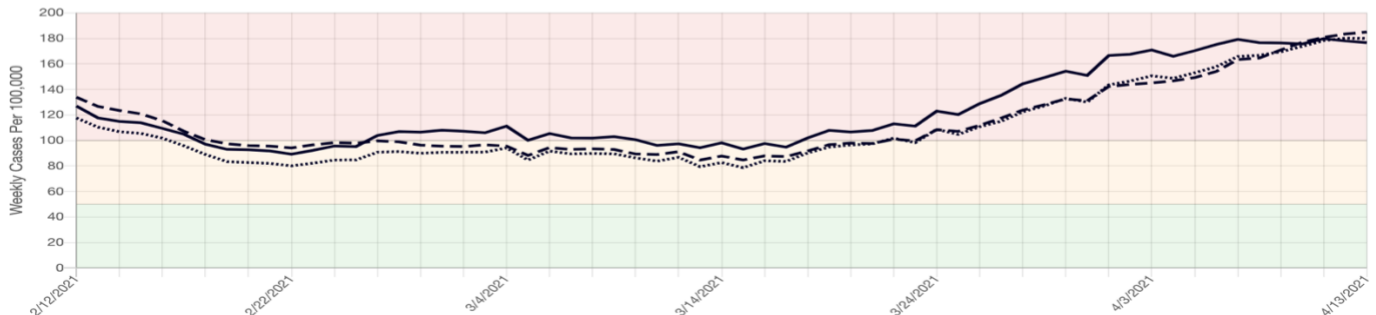
	4/6/2021	4/7/2021	4/8/2021	4/9/2021	4/10/2021	4/11/2021	4/12/2021
Tests per Day*	14900.3	14763.4	14763.7	14786.6	14997.7	14798.1	14786.1
Cases per Day*	582.1	595.3	586.9	586.0	583.6	597.4	591.4
Positivity Rate*	3.91 %	4.03 %	3.97 %	3.96 %	3.89 %	4.04 %	4.00 %
Number of new cases (7-day) per 100,000 population	175.2	179.2	176.6	176.4	175.6	179.8	178.0

* Calculated as 7-day rolling averages

Rolling Average 7-Day COVID Positivity Rate
(Hover over the line to see the rate for a specific day)



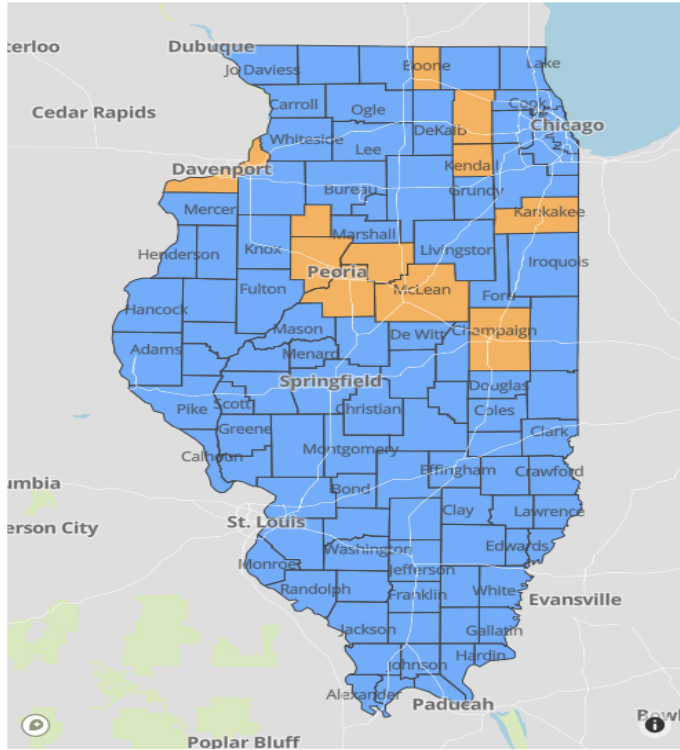
Weekly New Case Rate per 100,000 population
(Hover over the line to see the rate for a specific day)
(Solid - Selected Zip Codes; Dashed - Illinois; Dotted - Regional)



Cook County Level COVID-19 Risk Metrics: [Metrics](#)

1. “Cook” County = Suburban Cook
2. [Description](#) of these Metrics
3. Additional COVID-19 Surveillance Data by Age and Other Factors: [Cook County Department of Public Health](#)

Screenshot of data as displayed on Wednesday.



Week 13: 3/28/2021 Through 4/3/2021

[Click Here for Historical Details](#)

<p>New Cases Per 100,000</p> <p>Case rate reported Sun-Sat (Target: less than 50 per 100,000)</p> <hr/> <p>161 per 100k</p> <p>▲ Warning</p>	<p>Number of Deaths</p> <p>Death number reported Sun-Sat (Target: decreasing or stable Sun-Sat)</p> <hr/> <p>40</p> <p>✔ Target</p>
<p>Test Positivity (%)</p> <p>(%) positive tests reported Sun-Sat (Target: less than or equal to 8%)</p> <hr/> <p>5.1%</p> <p>✔ Target</p>	<p>Tests Performed</p> <p>Number of tests reported Sun-Sat Target: Testing is Sufficient when test positivity is less than or equal to 8%</p> <hr/> <p>87,060</p> <p>✔ Target</p>
<p>CLI ED Visits (%), Adults</p> <p>Emergency Department visits for COVID-19-like illness (Target: decreasing or stable Sun-Sat)</p> <hr/> <p>5.1%</p> <p>✔ Target</p>	<p>Number of CLI Admissions</p> <p>Hospital admissions for COVID-19-like illness (Target: decreasing or stable Sun-Sat)</p> <hr/> <p>337</p> <p>✔ Target</p>
<p>Cluster (%) of cases</p> <p>No Target This metric helps explain large increase in cases</p> <hr/> <p>1.0%</p>	<p>ICU (%) Available</p> <p>ICU bed availability (Target: at least 20% of ICU beds available)</p> <hr/> <p>21%</p> <p>✔ Target</p>

Additional COVID-19 Surveillance Data is Available through the CCDPH: [Cook County Department of Public Health](#)

Governor’s Restore Illinois Plan: [Metrics](#)

1. Region 10 Illinois Region COVID-19 Resurgence Data
 Screenshot of data displayed on Wednesday.

Region 10 Test Positivity

Date	Positive Tests	Total Tested	Daily Test Positivity	Test Positivity 7-Day Rolling Avg
4/1/2021	705	16,029	4.4	4.9
4/2/2021	691	12,517	5.5	5.1
4/3/2021	696	12,581	5.5	5.1
4/4/2021	594	10,380	5.7	5.2
4/5/2021	536	7,810	6.9	5.2
4/6/2021	709	11,771	6.0	5.3
4/7/2021	775	17,227	4.5	5.3
4/8/2021	857	18,412	4.7	5.4
4/9/2021	787	15,581	5.1	5.3
4/10/2021	876	11,578	7.6	5.5
4/11/2021	653	10,754	6.1	5.6

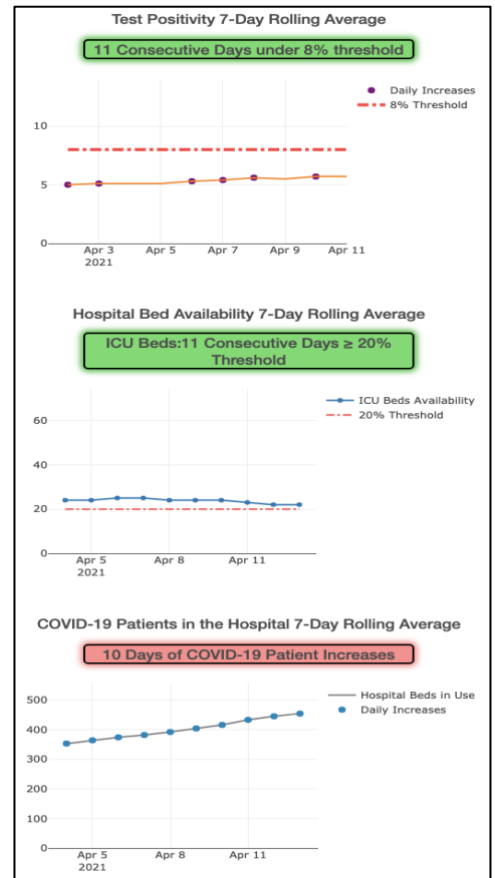
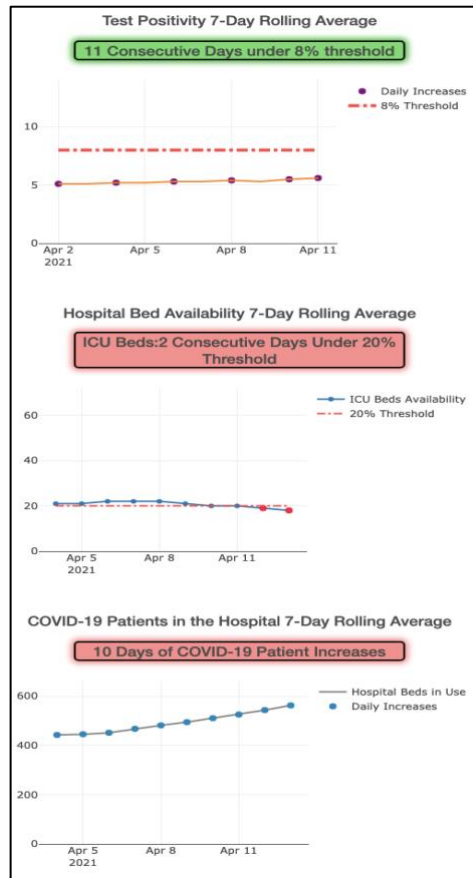
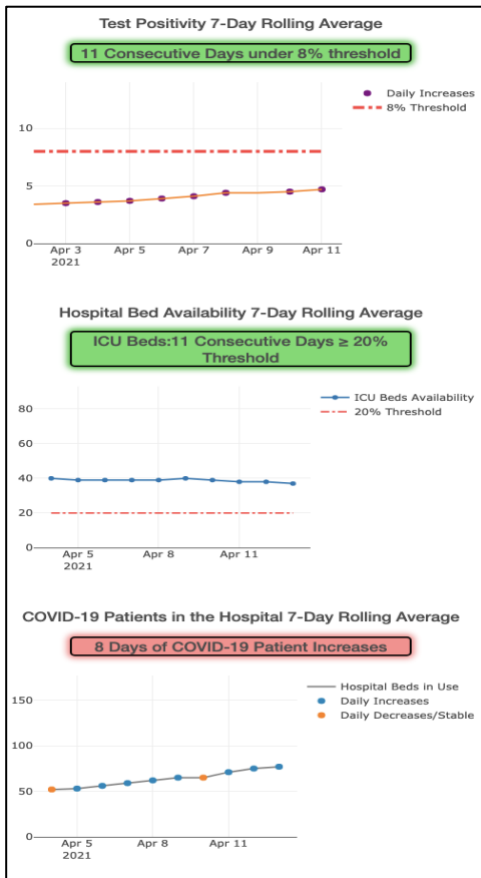
Region 9, 10 and 11 Illinois Region COVID-19 Resurgence Data

Screenshot of data displayed on Wednesday.

Region 9
 (Includes Lake and McHenry County)

Region 10
 (Includes Suburban Cook County)

Region 11
 (Includes Chicago)



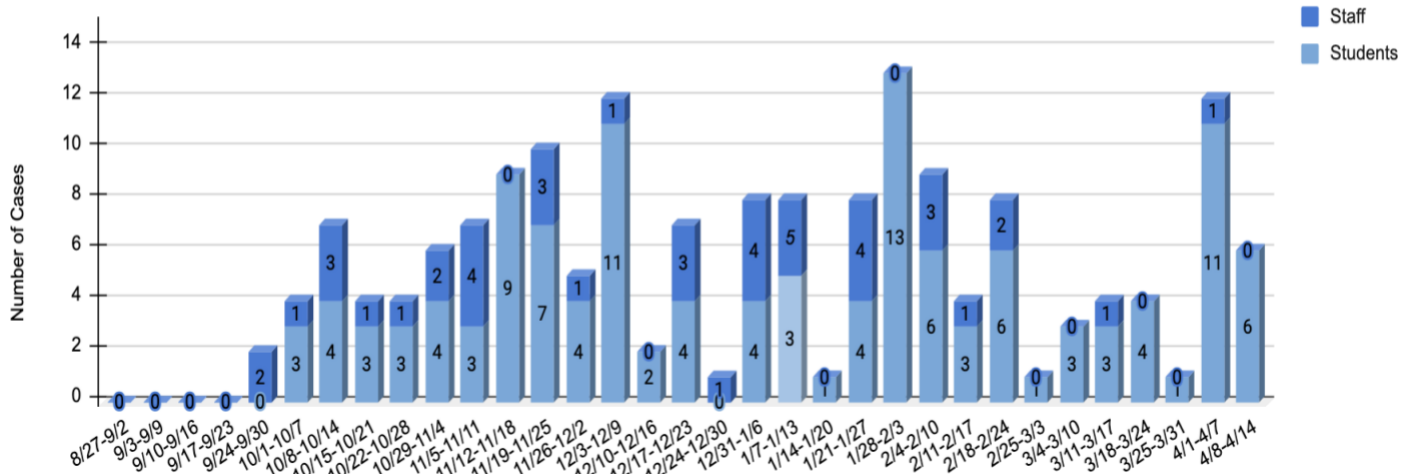
COVID-19 Positive Cases Reported in D39

Data reported as of Wednesday at 4:00 pm. Notices for cases are provided under COVID-19 Communications on [Metrics Dashboard page](#).

- D39 Students (Tracked by School Nurses)
- D39 Staff (Tracked by Human Resources Department)

New COVID Positive Incidents among Students and Staff

Weekly Total Count for District



Note: The Covid cases reported for students for the week of 4/1-4/7 were identified and isolated at the conclusion of spring break before entering school.

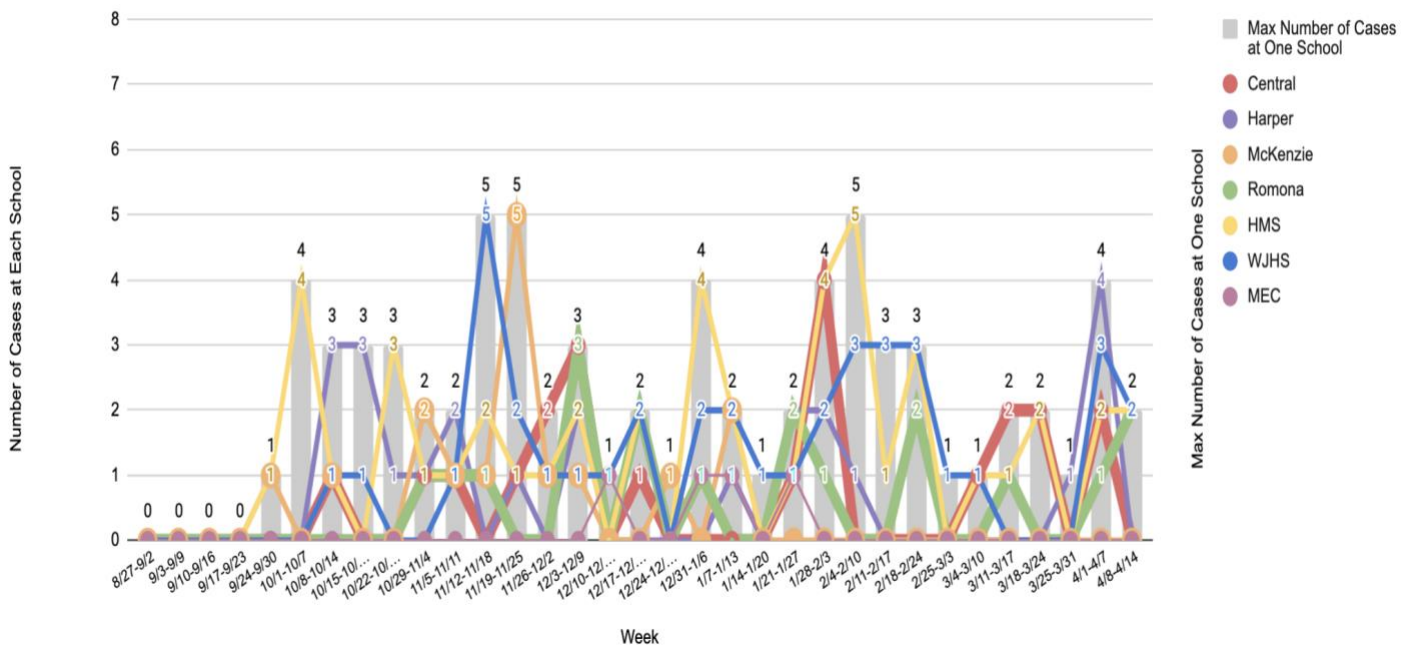
- Max Number of Cases at One School

The chart below reflects a compilation of the data reported on the previous page by school.

Data reported as of Wednesday at 4:00 pm. Notices for cases are provided under COVID-19 Communications on [Metrics Dashboard page](#).

Weekly New COVID Positive Incidents Per School

Staff and Students Combined

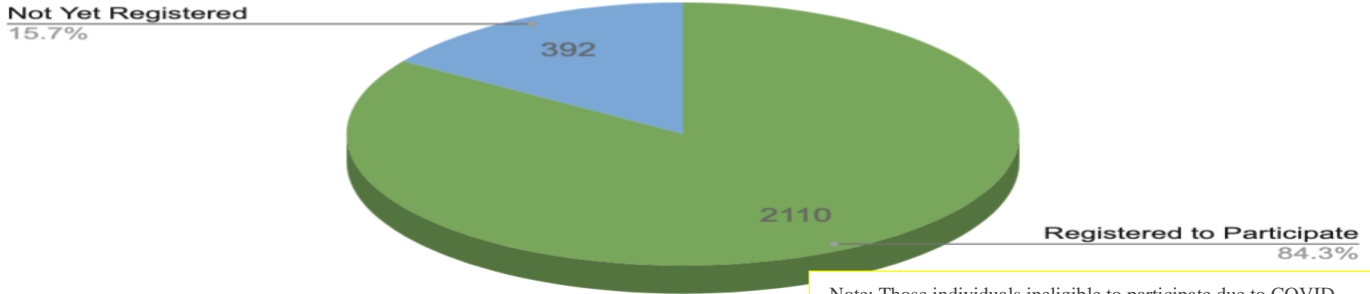


SafeGuard Screening Metrics

Data reported as of Wednesday for each week.

Student Registration for SafeGuard Screening

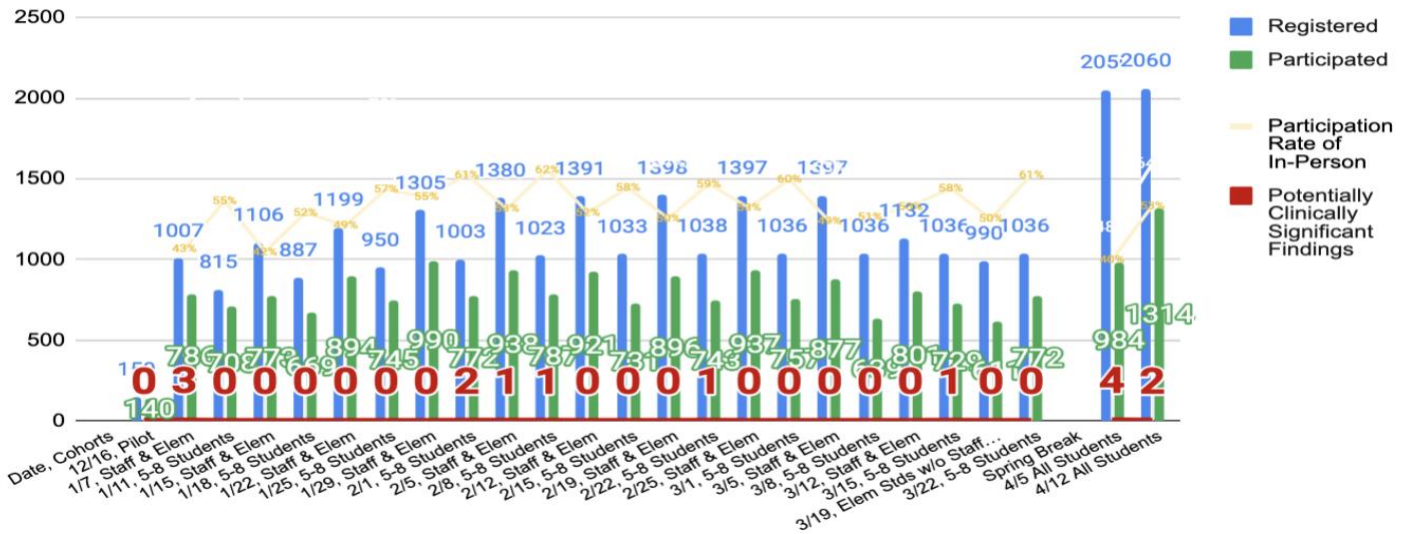
Registration of In-Person Students



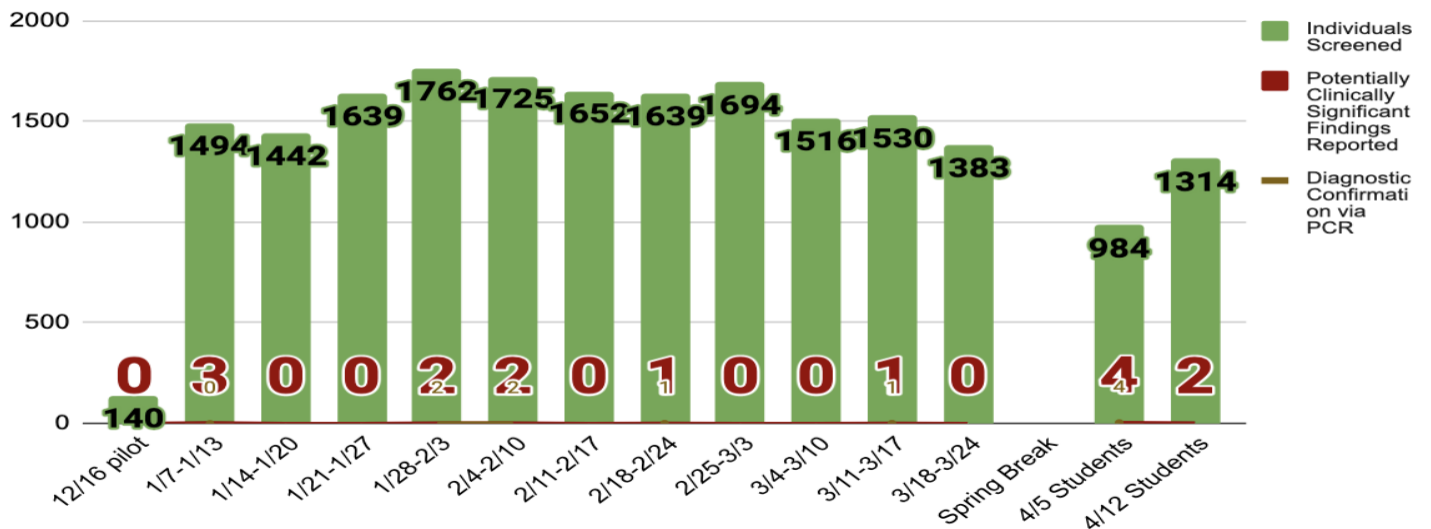
Note: Those individuals ineligible to participate due to COVID diagnosis in last 90 days have been removed from total counts.

Note: Staff participation has discontinued as staff completed their vaccine cycle. More than 94% of staff are now fully vaccinated.

SafeGuard Screening Experience



Weekly Summary of Screening



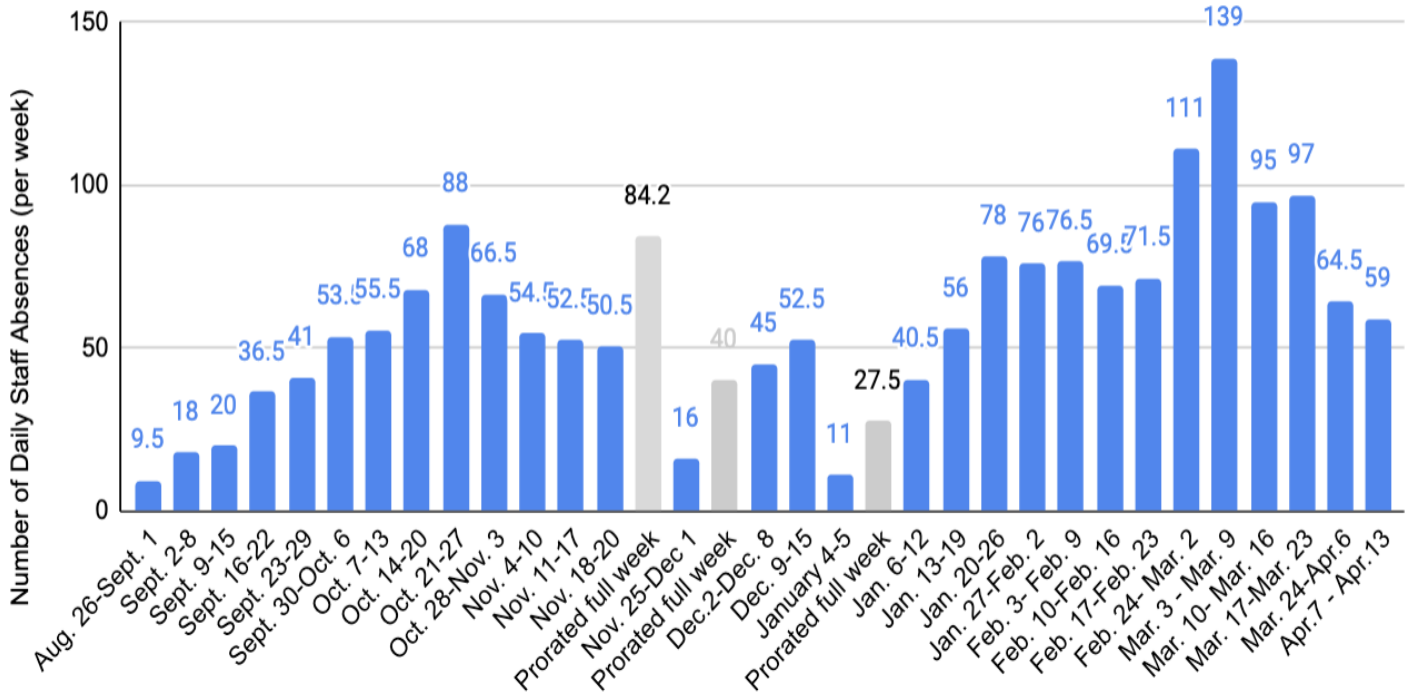
Note: Individuals who traveled over spring break were required to complete a diagnostic PCR test the week of 4/5 or just prior to return.

Staffing Levels - (Tracked by Human Resources Department via Frontline)

Data reported as of noon on Wednesday for each week.

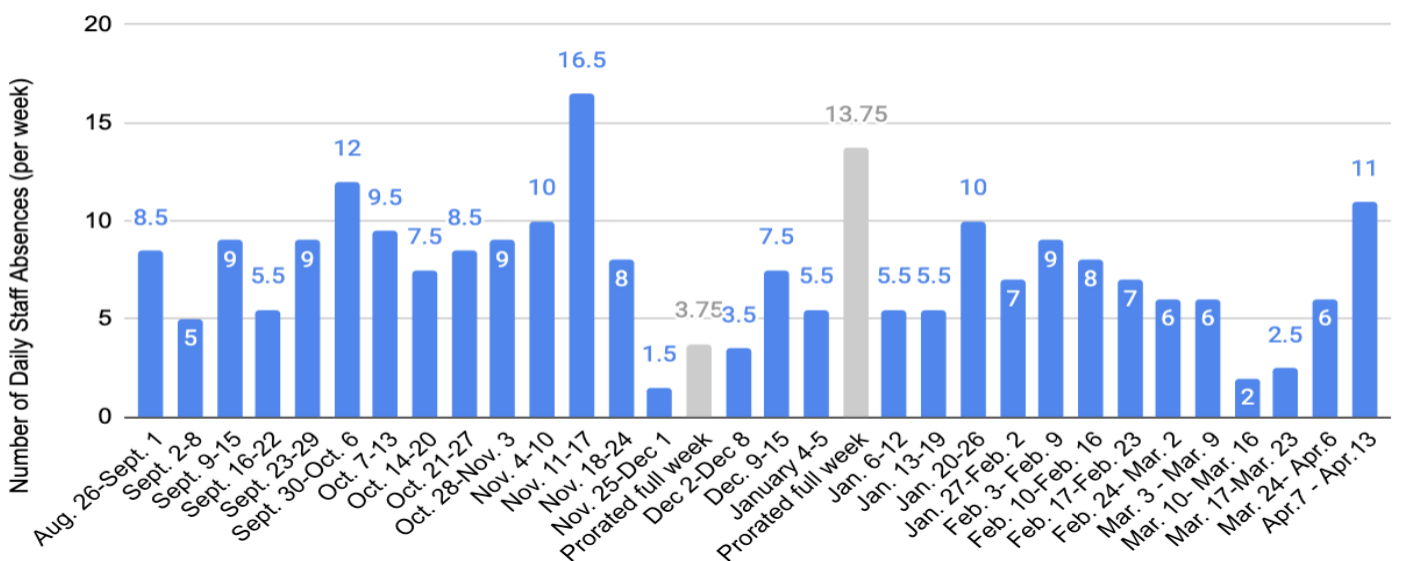
- Certificated Staff Sick Day Absences (382 employees; 1,910 work days per week)

Certified Staff Absences



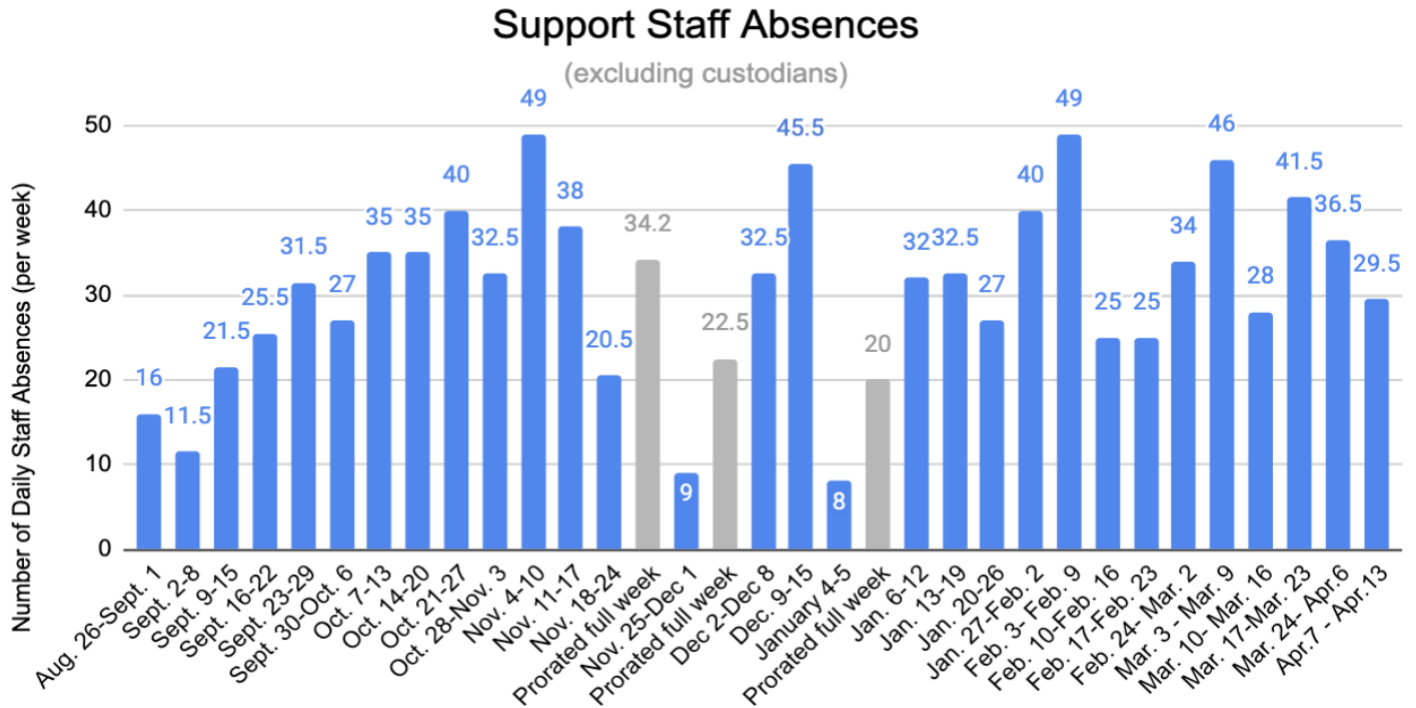
- Custodial Staff Sick Day Absences (34 employees; 170 work days per week)

Custodian Absences

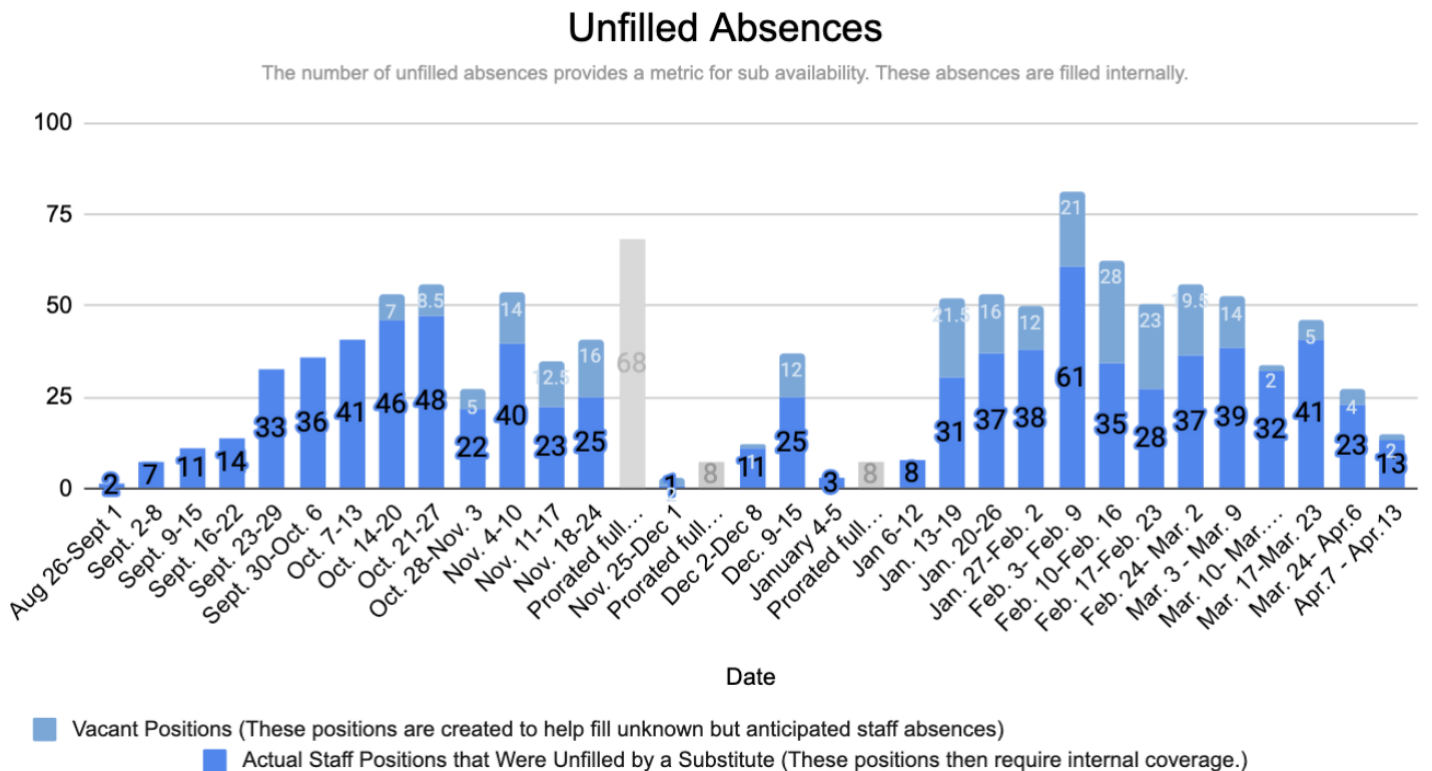


Note: The grey bar estimates absences based on those in the first half of the week.

- Support Staff Absences (152 employees; 760 work days per week)



- Availability of Substitutes (As Measured by Unfilled Substitute Positions; Filled Internally)



Note: Correction in disaggregated data for vacant and actual staff position absences.

Note: Unfilled absences have been delineated between actual staff positions that were unfilled and unfilled vacant positions of preemptive substitute positions created to help fill unknown but anticipated absences.

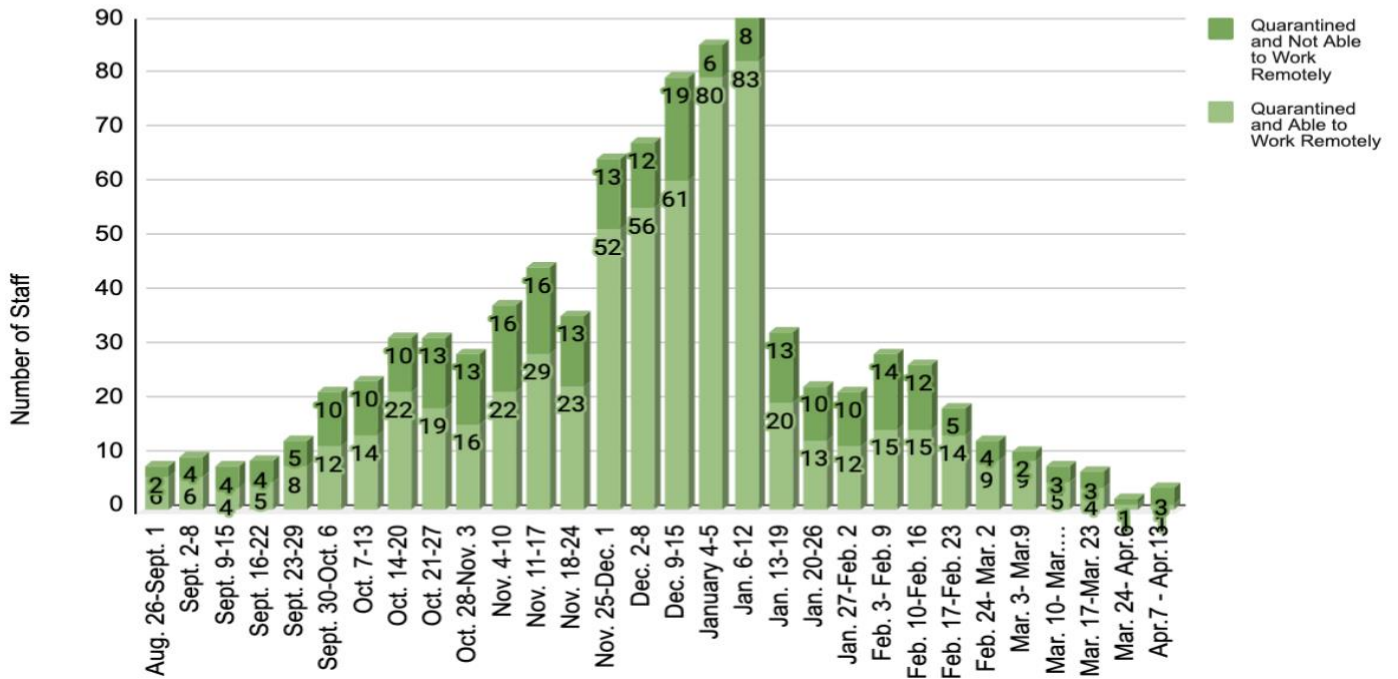
Staff Quarantine Rates (COVID Days)

- Staff Working While on Quarantine
- Staff Not Working While on Quarantine

Data reported as of noon on Wednesday for each week.

Staff on Quarantine

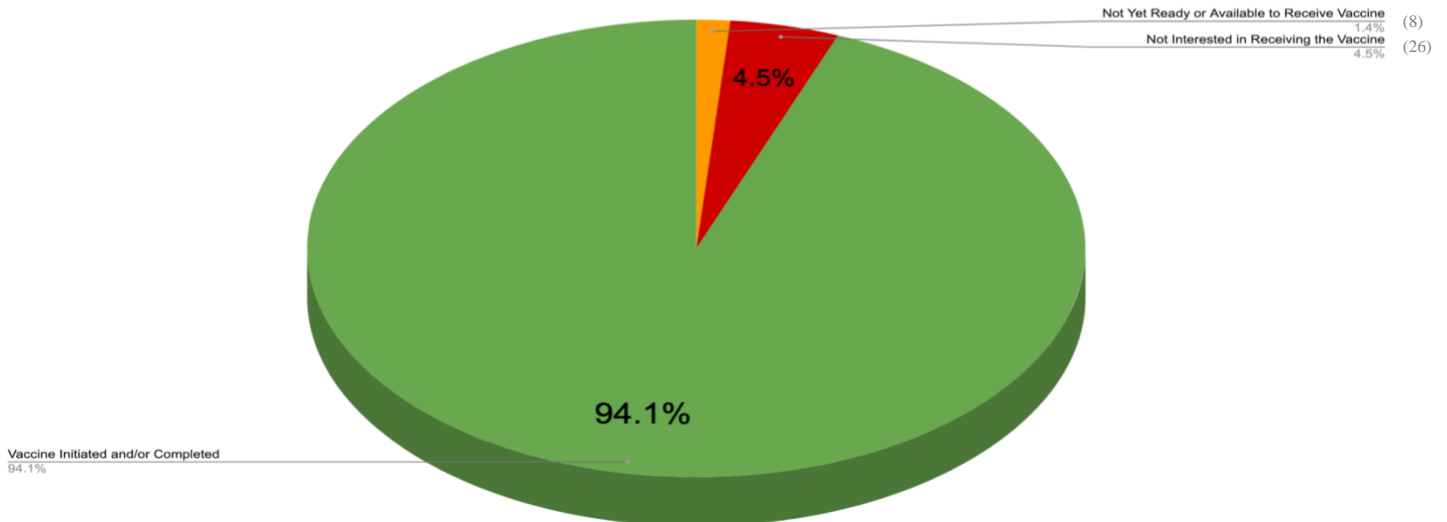
(Individual staff count; Does not include staff associated with a classroom on quarantine)



Vaccine Status

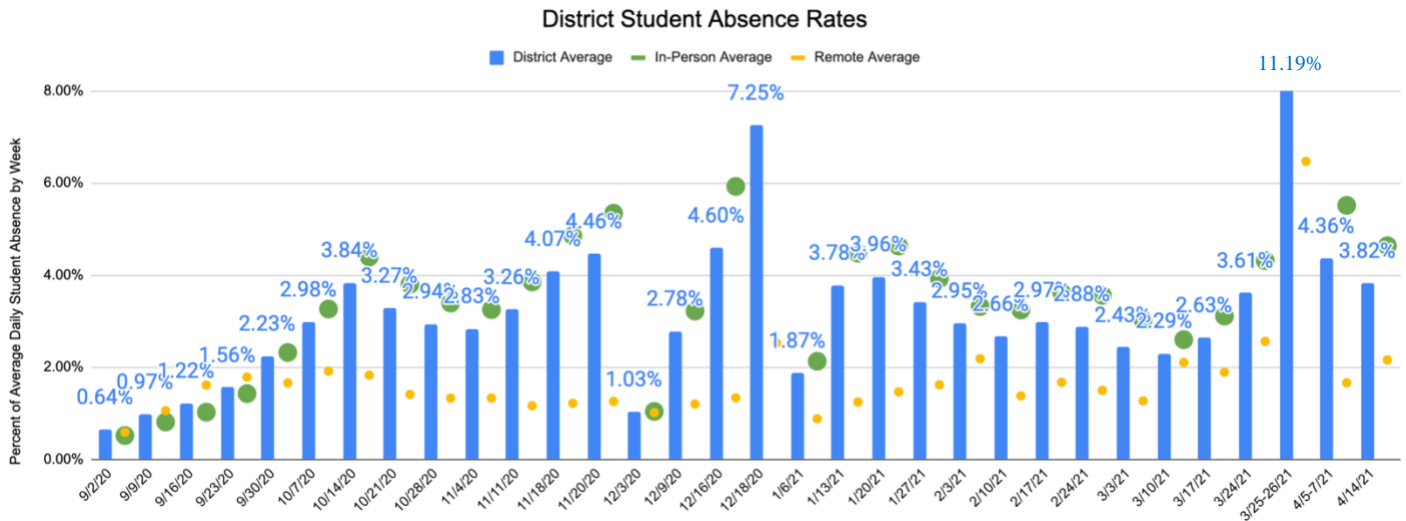
574 D39 Employees Reporting.

(Employees indicating a need for assistance accessing a vaccine appointment = 0%)



Student Absences (Tracked within Student Information System)

- Daily Student Absences



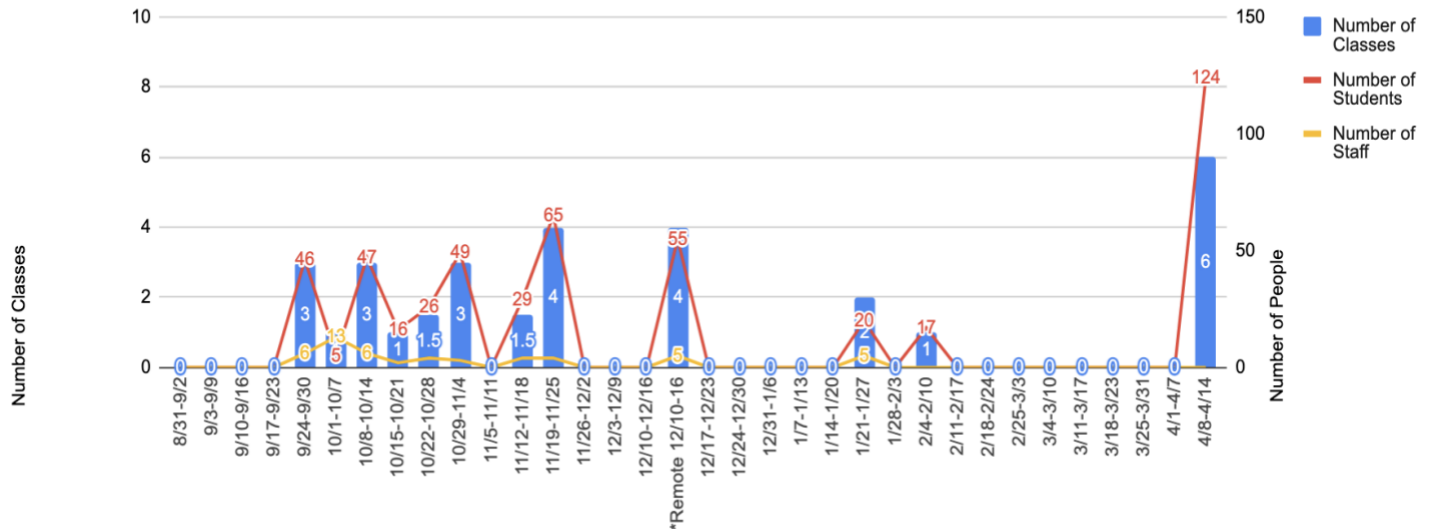
Note: Data for 3/26-27/21 reflect the 2 days before spring break. Absence rates are typically high during the few days before spring break as families leave early for travel, and this year's data reflected this trend. Data for 4/5-7/21 reflect the 3 days of school after spring break.

Targets for Student Absences			
	Substantial	Moderate	Minimal
Weekly Average by District	>7%	<=6% to >4%	<=4%
Typical annual student attendance in District 39 in 95.7% (ISBE Report Card). Thus, typical student absence rates are approximately 4.3%.			

Class Quarantine Rates

Data reported as of noon on Wednesday for each week reflecting the number of classrooms placed onto quarantine, as well as the number of students and staff associated placed onto quarantine as part of the classroom quarantine.

Classroom Placed on Quarantine



Note: Two elementary homeroom classes and four 5th-8th grade homeroom classes were moved to remote learning and placed on quarantine due to a case identified among the students within each homeroom cohort. At the direction of the CCDPH, a homeroom class quarantine has occurred at the elementary level throughout the school year when an elementary student case is identified due to the natural movement of elementary students within their classroom despite the 6-foot distancing that is provided. Homeroom class quarantine has been more typically avoided at the 5th-8th grade level due to distancing provided within the homeroom classes. However, with the increase of students attending school in-person in 4th quarter and classroom distancing reduced to less than 6 feet within classrooms at the 5th-8th grade level, classroom quarantines have increased when a positive student case is identified within a homeroom cohort.

Effective Instruction

1. Engagement Levels in Remote Learning

A Targeted Review of the D39 Enhanced Fully Remote Learning Program was conducted. [A Report of Findings](#) was presented at the October Board of Education Meeting ([Agenda](#) & [Video](#)). Follow-up action steps and improvement efforts were discussed and initiated, and will be presented at the October Board Committee of the Whole Meeting.

A Targeted Review of the D39 In-Person Learning Program was conducted. A [Report of Findings](#) was presented at the November Board of Education Meeting ([Agenda](#) & [Video](#)). Follow-up action steps and improvement efforts will be discussed and initiated, and will be presented at the December Board Committee of the Whole Meeting.

2. Learning Progress of Students

In the winter, the district administered the NWEA MAP assessment to students in grades 2-8 as a benchmark of students' academic achievement and growth. The 2021 Winter Benchmark Assessment Report will be presented at the March Board of Education Committee of the Whole Meeting ([Agenda](#) & [Video](#)). (Links to these will be provided once available.)

In the fall, the district administered the NWEA MAP assessment to students in grades 2-8 to evaluate academic achievement and growth. The [2020 Fall Assessment Report](#) was presented at the November Board of Education Meeting ([Agenda](#) & [Video](#)).

In the winter, the district administered the NWEA MAP assessment to students in grades 2-8 as a mid-year check point on academic achievement and growth. The [Winter 2021 Winter Mid-Year Check Point Presentation Report](#) was presented at the March Committee of the Whole Board of Education Meeting ([Presentation](#), [Agenda](#) & [Video](#).)

2. **Current Scientific Research:** The research on SARS-CoV2 and COVID-19 continues to develop rapidly. The latest findings on spread, mitigation, treatment, and health impact will inform the District's decision-making process.

[Center for Disease Control and Prevention](#)

On February 12, 2021, the Center for Disease Control and Prevention (CDC) issued updated guidance for school reopening. This guidance can be found [here](#).

[Illinois State Board of Education and Illinois Department of Public Health](#)

On Tuesday, March 9, 2021, the Illinois State Board of Education (ISBE) and the Illinois Department of Education (IDPH) issued Revised Public Health Guidance for Schools. This guidance can be found [here](#).